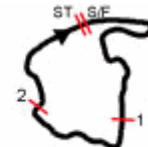


AMA PRO ROAD RACING  
 SUZUKI WHITE LIGHTNING AMA PRO SUPERBIKE NATIONALS  
 VIRGINIA INTERNATIONAL RACEWAY - ALTON, VA  
 ROUND 14 OF 18 - AUGUST 13-15, 2010

15D



VIRGINIA INTERNATIONAL RACEWAY

AMA Pro Daytona SportBike presented by AMSOIL

BEST SEGMENT TIMES - DAYTONA SPORTBIKE RACE 2

SEGMENT #1					SEGMENT #2					SEGMENT #3				
POS.	#	NAME	BEST TIME	IN LAP	POS.	#	NAME	BEST TIME	IN LAP	POS.	#	NAME	BEST TIME	IN LAP
1	1	D. Eslick	42.445	13	1	15	S. Rapp	25.328	6	1	36	M. Cardenas	19.826	5
2	15	S. Rapp	42.506	2	2	36	M. Cardenas	25.373	13	2	15	S. Rapp	19.841	1
3	36	M. Cardenas	42.557	13	3	57	C. West	25.417	1	3	8	J. Herrin	19.925	6
4	57	C. West	42.673	12	4	2	D. Westby	25.437	10	4	57	C. West	19.942	10
5	60	M. Beck	42.680	10	5	4	C. Seller	25.476	1	5	30	B. Fong	19.957	1
6	34	M. Barnes	42.713	16	6	6	T. Aquino	25.481	1	6	54	P. Jacobsen	19.974	22
7	2	D. Westby	42.782	20	7	8	J. Herrin	25.501	14	7	34	M. Barnes	19.995	5
8	8	J. Herrin	42.796	12	8	54	P. Jacobsen	25.506	11	8	1	D. Eslick	20.026	14
9	54	P. Jacobsen	42.815	16	9	119	J. Wood	25.520	5	9	6	T. Aquino	20.035	7
10	6	T. Aquino	42.881	3	10	1	D. Eslick	25.551	2	10	4	C. Seller	20.078	1
11	4	C. Seller	43.048	5	11	60	M. Beck	25.591	8	11	2	D. Westby	20.094	7
12	119	J. Wood	43.123	3	12	30	B. Fong	25.680	1	12	60	M. Beck	20.103	10
13	133	K. Wyman	43.344	3	13	34	M. Barnes	25.767	10	13	210	P. Allison	20.126	8
14	7	F. Amantini	43.446	7	14	210	P. Allison	25.800	15	14	119	J. Wood	20.282	5
15	210	P. Allison	43.469	10	15	55	C. Fillmore	25.801	2	15	32	S. Villa	20.288	11
16	32	S. Villa	43.711	12	16	7	F. Amantini	25.881	2	16	7	F. Amantini	20.330	7
17	120	J. Christie	43.747	12	17	32	S. Villa	25.921	12	17	47	J. Day	20.361	2
18	38	K. Turner	43.868	21	18	133	K. Wyman	25.984	2	18	133	K. Wyman	20.367	5
19	811	M. Morgan	44.229	7	19	47	J. Day	26.053	2	19	55	C. Fillmore	20.374	1
20	78	R. Wacker	44.259	4	20	78	R. Wacker	26.104	5	20	120	J. Christie	20.398	2
21	47	J. Day	44.337	2	21	120	J. Christie	26.180	12	21	38	K. Turner	20.471	3
22	13	M. Paris	44.423	11	22	38	K. Turner	26.322	6	22	13	M. Paris	20.581	9
23	461	A. Stacey	44.777	7	23	811	M. Morgan	26.358	2	23	811	M. Morgan	20.619	9
24	30	B. Fong	47.170	1	24	461	A. Stacey	26.572	3	24	78	R. Wacker	20.643	5
25	55	C. Fillmore	47.280	1	25	13	M. Paris	26.820	3	25	461	A. Stacey	20.755	4
26	175	S. Rozynski	48.991	1	26	175	S. Rozynski	27.314	1	26	175	S. Rozynski	21.081	1

TRAP SPEED (mph)

POS.	#	NAME	TOP SPEED	IN LAP
1	15	S. Rapp	164.53	2
2	34	M. Barnes	164.21	2
3	36	M. Cardenas	164.14	2
4	60	M. Beck	163.82	2
5	119	J. Wood	163.08	2
6	133	K. Wyman	162.92	2
7	210	P. Allison	162.84	2
8	13	M. Paris	162.65	2
9	7	F. Amantini	162.65	2
10	1	D. Eslick	162.38	16
11	47	J. Day	162.26	2
12	38	K. Turner	162.07	2
13	6	T. Aquino	161.99	2
14	54	P. Jacobsen	161.91	16
15	57	C. West	161.61	2
16	4	C. Seller	161.57	2
17	120	J. Christie	161.45	2
18	2	D. Westby	161.26	2
19	811	M. Morgan	161.26	2
20	8	J. Herrin	159.71	2
21	32	S. Villa	158.93	2
22	461	A. Stacey	157.57	2
23	55	C. Fillmore	157.32	2
24	78	R. Wacker	155.70	2
25	175	S. Rozynski	77.39	1
26	30	B. Fong	62.26	1